



PRESSURE SENSORS: TYPE PR200

SENSOR IN METAL / PLASTIC BODY

PROVISIONAL DATA

DESCRIPTION:

Isolated diaphragm micromachined silicon pressure sensor with metal thread and plastic body. Electrical connection is made via flying leads.

FEATURES:

- Suitable for use in corrosive media
- Stainless steel diaphragm
- Rated pressures 1 to 50 Bar
- Operation up to 125°C
- Accuracy $\pm 2\%$ FSO
- Current or voltage output
- Ratiometric or absolute voltage output
- Absolute or gauge pressure indication
- Metal thread with hexagon for tightening
- Range of thread sizes and materials
- Groove for o-ring seal
- Typical applications include refrigeration, air conditioning systems & industrial process control

OPTIONS:

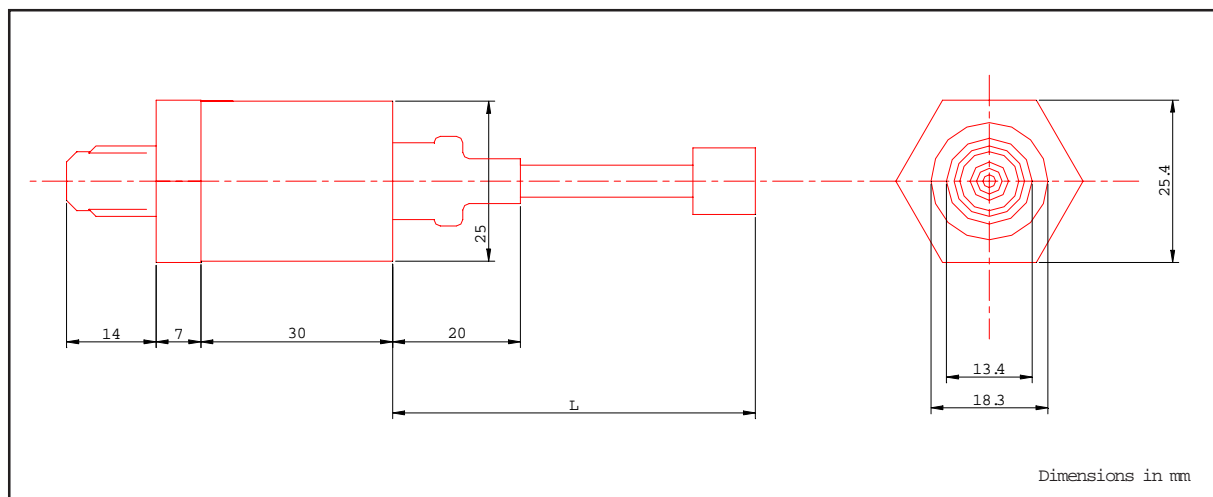
- Other pressure ratings
- Alternative output ranges and tolerances
- Different connectors and wire lengths
- Other thread sizes
- Alternative thread materials e.g. Hastalloy C276, Monel 400, Inconel, Titanium
- Different diaphragm materials e.g. Nickel



DATA:

Rated pressure 1 to 50 Bar (see table)
Maximum overload 3 x rated pressure
Temperature range -40 to +125°C
Body material Glass-filled nylon
Supply voltage 6 to 28 V d.c. (voltage mode)
Output range 0.5-4.5 V or 4-20 mA d.c.
Accuracy $\pm 2\%$ FSO over -20 to +120°C

DIMENSIONS:



Data sheet D-PR200-A

Crown Industrial Estate, Priorswood Rd
 Taunton, Somerset TA2 8QY UK
 Tel +44 (0)1823 335200
 Fax +44 (0)1823 332637

808 US Highway 1
 Edison, New Jersey 08817-4695 USA
 Tel +1 (732) 287 2870
 Fax +1 (732) 287 8847

967 Windfall Road
 St Marys, Pennsylvania 15857-3397 USA
 Tel +1 (814) 834 9140
 Fax +1 (814) 781 7969



PRESSURE SENSORS: TYPE PR200

SENSOR IN METAL / PLASTIC BODY

PROVISIONAL DATA

CODING:

e.g. PR200G001VA-CBAL251

Example	Description	Standard values	
PR200	Sensor style		
G	Pressure mode	A G	Absolute Gauge
001	Pressure rating	001 002 005 010 020 050	1 Bar 2 Bar 5 Bar 10 Bar 20 Bar 50 Bar
VA	Output mode	VA VR CM	Voltage absolute Voltage ratiometric Current
C	Thread size	A B C D	1/8 BSP 1/4 BSP M10 x 1.25 7/16-20 UNF
B	Thread material	A B	Stainless steel AISI 316 Brass CZ132 (DZR)
A	Connector	A B C D E	No connector AMP 174359-2 Molex 52116-0341 M8 x 1 M12 x 1
L251	Wire length L mm	L251 L501 L751 L102	250 ± 10 500 ± 10 750 ± 20 1000 ± 20

Data sheet D-PR200-A