



GENERAL PURPOSE SENSORS

ROLLING SURFACE TEMPERATURE SENSORS WITH EXTENSIONS LEADS

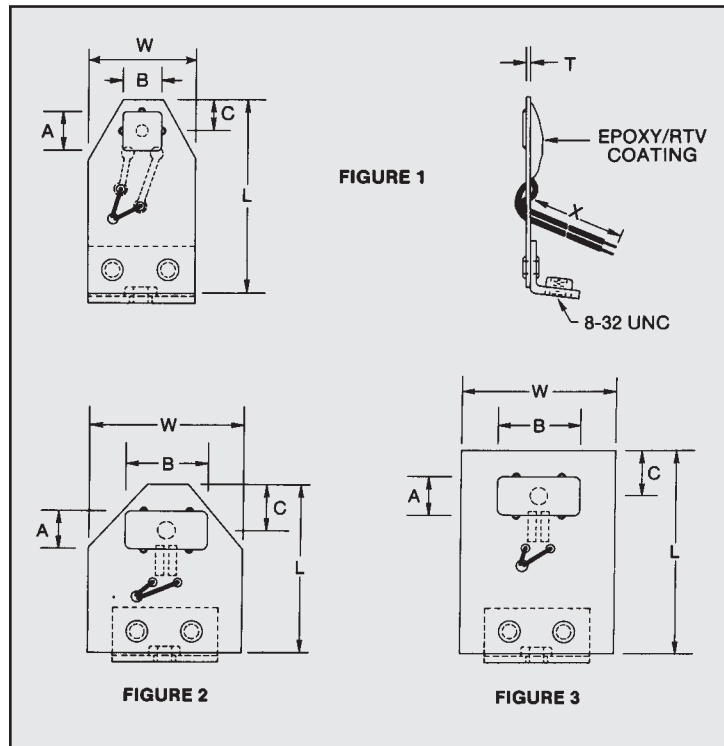
TYPE M4000:

Features

- Designed for surface temperature measurement of slowly rotating rollers, bearings or cams. Thermistors are attached to back side of thin metal plate that contacts the rolling surface.
- Mounting bracket with self-locking nut is riveted to the flexible board.
- Small to medium bead or chip thermistor types <math><0.100''</math> OD.
- Hook-up wire extension leads.
- Maximum temp. ratings from 60°C up to 200°C.

Options

- NEMA grade printed circuit board materials are used for the flexible portion of the sensor.
- P.C. board thickness "T": from 0.015" to 0.063".
- Board length "L": 1.50" to 2.00" typical (or as specified).
- Board width "W": 1.00" to 1.50" typical (or as specified).
- Mounting bracket is Aluminum with self-locking nut.
- Standard metal contact material is .007" beryllium-copper.
- Brass, stainless steel, aluminum or other contact materials are also available in thicknesses from 0.005" to 0.016".
- Metal contact dimensions:
 - "A" = 0.375" typical (or as specified).
 - "B" = 0.375" and 0.750" typical (or as specified).
- Dimension from edge of flexible board to centerline of metal contact "C": 0.375" to 0.500" typical (or as specified).
- Lead length "X" : 48 inches (typical).
- Lead-wire gauge sizes from #22 to #32 AWG.



TYPE M4200:

Features

- Designed for surface temperature measurement of fuser rollers in office printers, copiers or laminators.
- Thermistors are mounted in the center of a foam block and covered with Kapton or Teflon tape to minimize contact pressure, friction and wear on the roller surface.
- Mounting brackets are thin metal frames.
- Extension leads are fastened to flexible circuit boards or to tabs molded into plastic bodies.
- Small to medium bead or chip thermistor types <math><0.100''</math> OD.
- Hook-up wire extension leads.
- Maximum temp. ratings from 60°C up to 200°C.

Options

- Typical block material is high temperature, closed cell silicone foam from 0.250" to 0.500" thick.
- Block length and width are 0.375" x 0.375" typical, but can be cut to any specified dimension.
- Metal frame material is 0.010" stainless steel typical, but can be specified in other materials or thicknesses as desired.
- Metal frame, flexible circuit boards or plastic body dimensions can be specified as required.
- Kapton or Teflon tape is 0.003" thick per layer.
- Lead length "X" : 12 inches (typical).
- Lead-wire gauge sizes from #22 to #32 AWG.